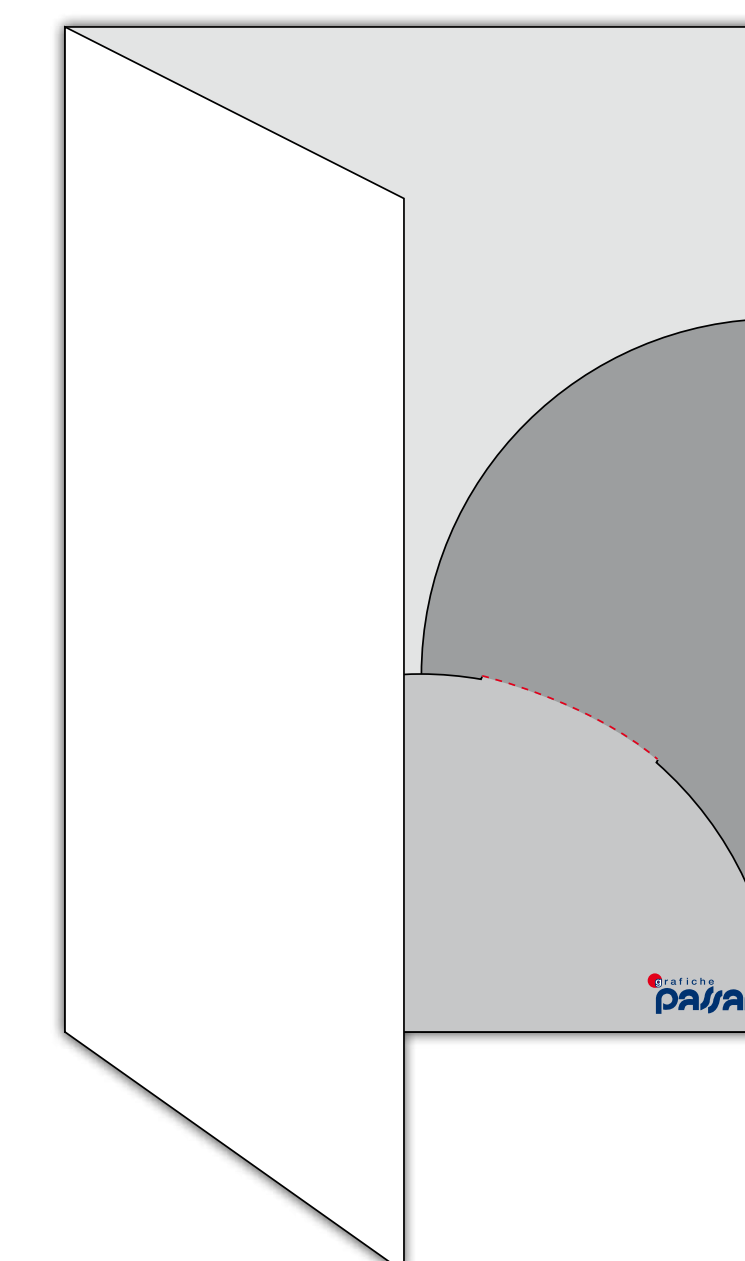
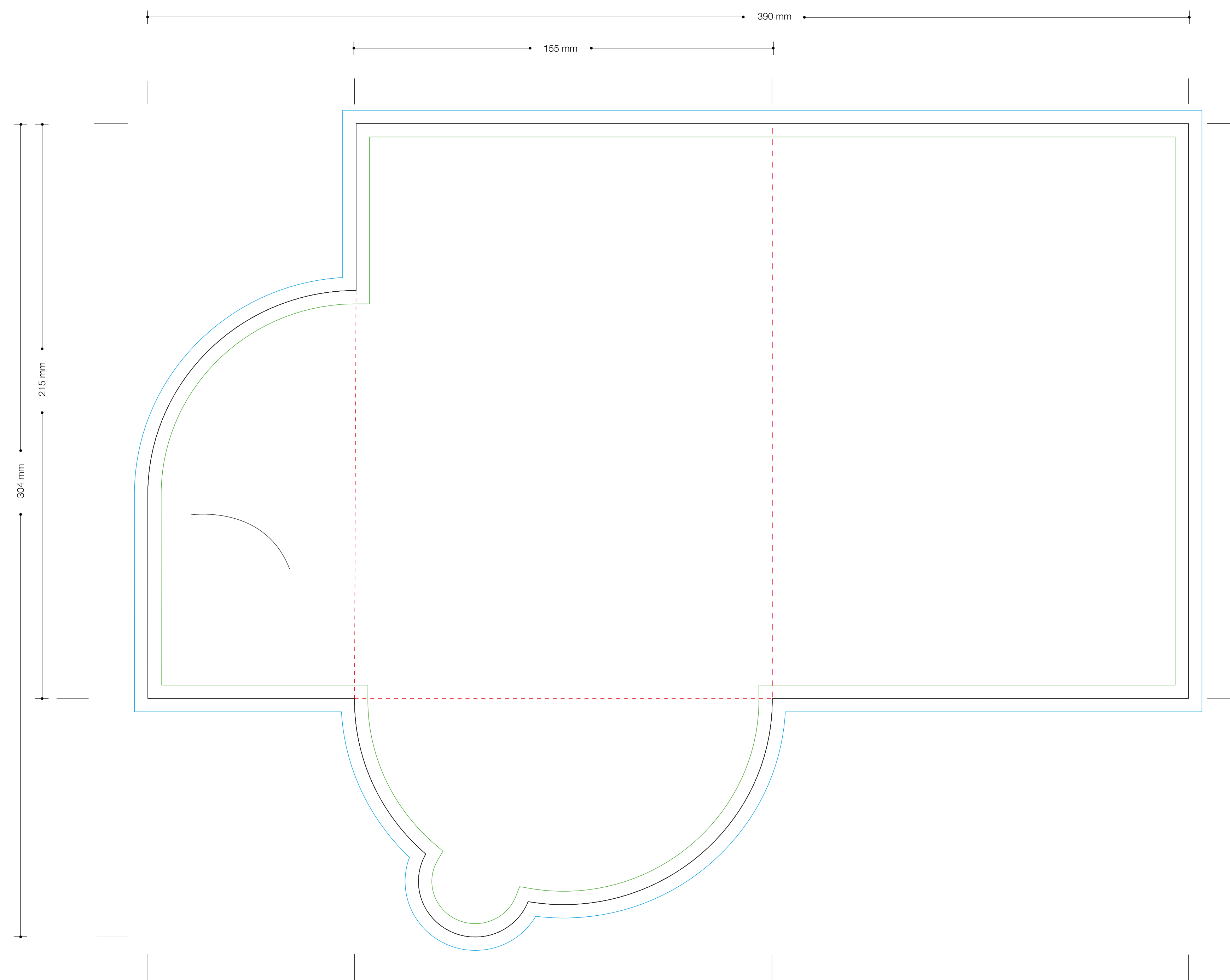






CARTELLA VISIVA
- FUSTELLATA E CORDONATA
- FUSTELLA DI NS. PROPRIETÀ

CARTA:
- PATINATA OPACA 300 gr

RISOLUZIONE:
- 300 dpi

TIPI DI FILE ACCETTATI:
- TIFF
- JPG
- PDF (TESTI CONVERTITI IN TRACCIATI)



-  DIMENSIONI DEL FILE DA INVIARE
-  AREA DI TAGLIO
-  SEGNO DI PIEGA
-  POSIZIONE TESTI E LOGHI A MINIMO 5 mm DAI BORDI